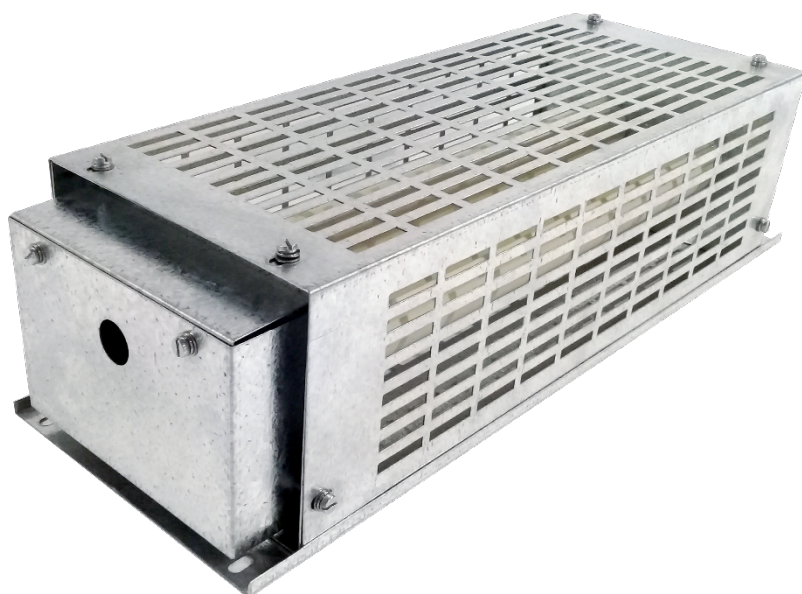


WIRE-WOUND RESISTORS

ENCLOSED

IP20



REV	DATE	CHANGE DESCRIPTION	CHANGED BY
1	2020-10-05	•	W. M

DESCRIPTION

A compact, robust enclosure for a single or two wire-wound resistors. Due to heat dissipated by resistors it is often required the resistor be enclosed and ideally mounted external to an equipment panel. It is also a suitable solution for the dynamic braking of a small electric motors driven by a variable frequency drive.

APPLICATIONS

Dynamic braking, current limiting, and heating of equipment enclosures to drive out undesired moisture.

Ideal for training purposes at Educational institutions such as universities and colleges.

INDUSTRY

Automation, Motor Control, Manufacturing, Mining.

ACTIVE MATERIAL

Wire-wound resistors wound with high grade chrome-aluminium, chrome-nickel or copper-nickel alloy with a low temperature coefficient.

MECHANICAL CHARACTERISTICS

- Galvanized enclosure. Grade 304 stainless steel optional.
- Ingress Protection: IP20. For IP22 refer to our enclosure type 9522-014.
- Removable terminal cover.
- Includes holes for panel mounting.

TERMINAL CONNECTIONS

- M6K, 6mm² terminal block for 100 and 300W enclosures.
- Two M6 brass threaded stud terminals for 500 and 1000W enclosures.
- Cable entry: 20mm Ø hole for Size-0 compression gland.
- Resistors may be fitted with adjustable sliders if requested.

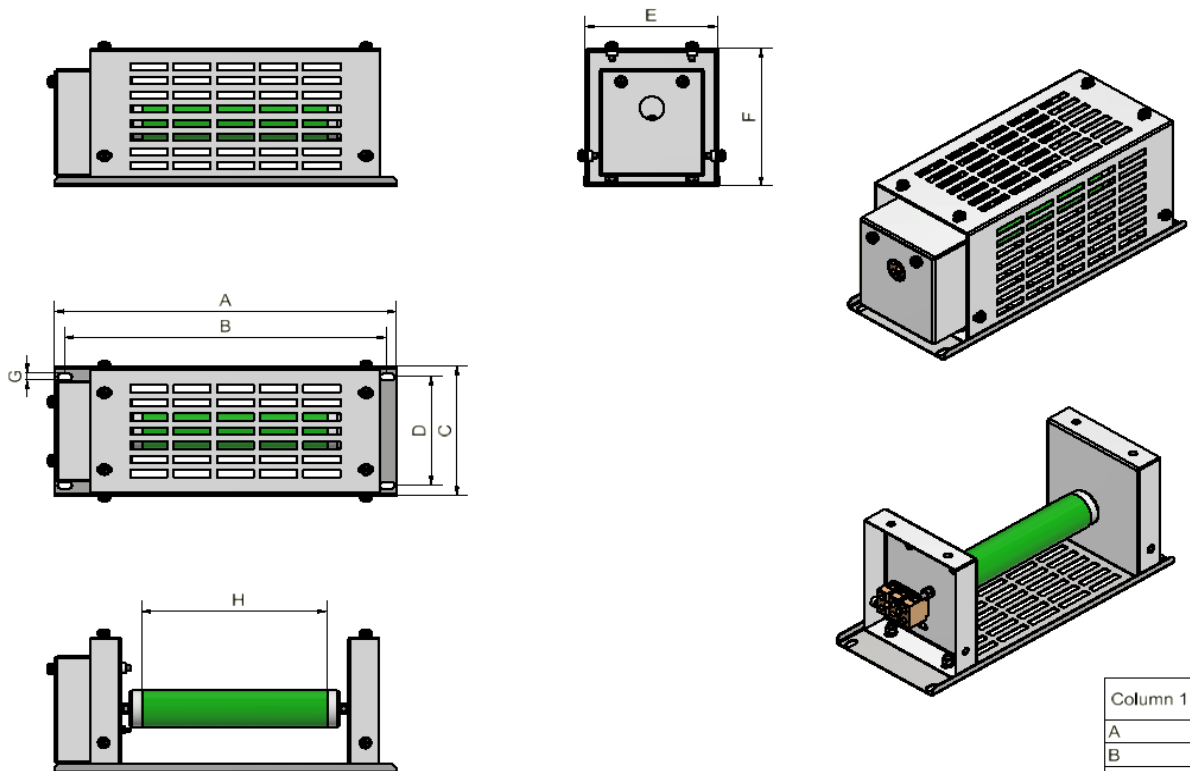
ELECTRICAL CHARACTERISTICS

Voltage Rating. For 1.5kV refer to our enclosure type 9522-012.	600V
Maximum Current	45A
POWER RATING	ENCLOSURE
100W	9522-016
300W	9522-015
500W	9522-006
1000W (2x500W)	9522-014
Resistance Tolerance:	+/- 5%
Thermal Protection	Optional for our enclosure type 9522-014

.	2020/10/05	1	Microsoft Office User	1 of 5
DOCUMENT NUMBER	PUBLISHED DATE	REVISION	CREATED BY	PAGE



100W RESISTOR ENCLOSURE TYPE 9522-016

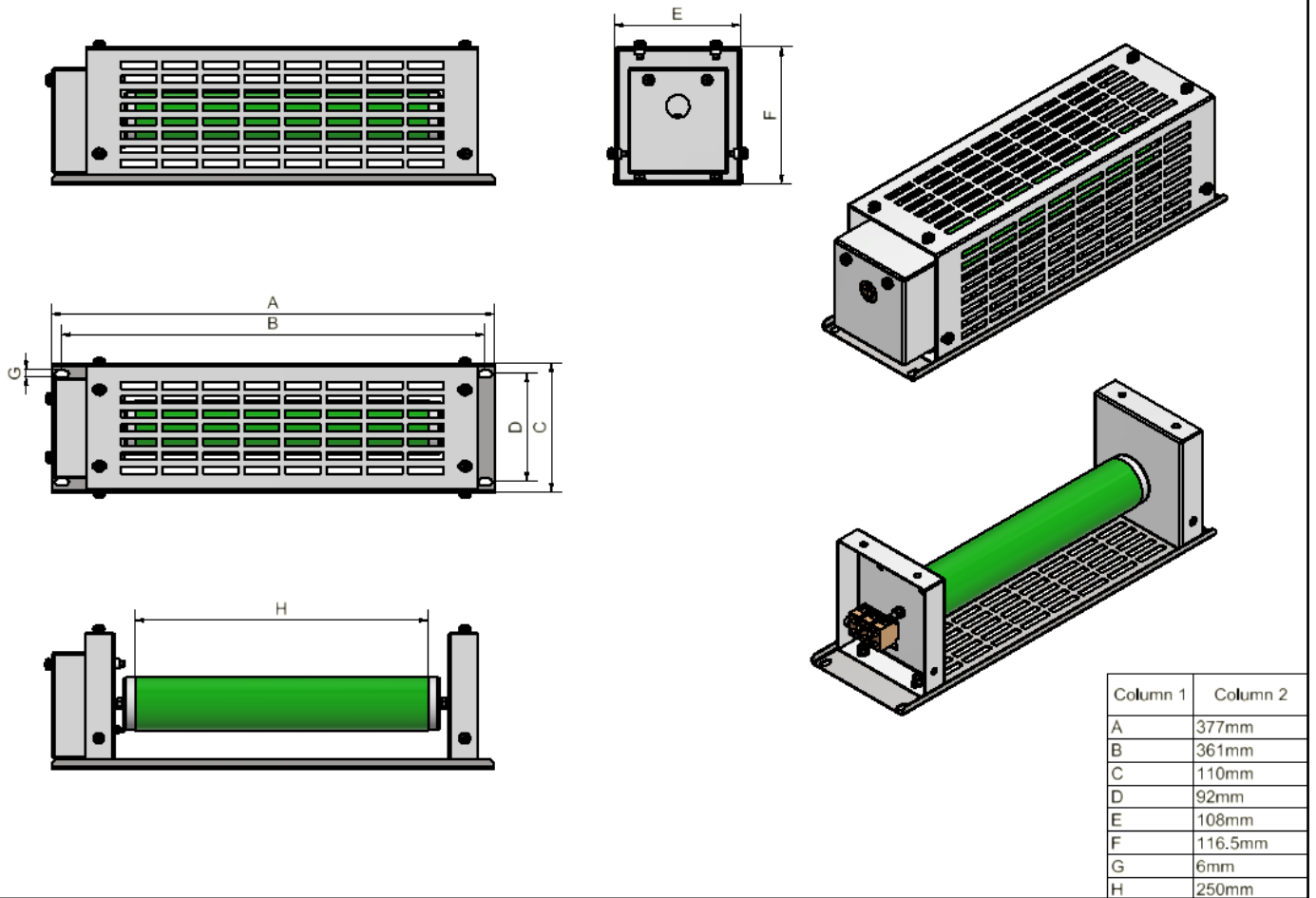


Column 1	Column 2
A	277mm
B	261mm
C	110mm
D	92mm
E	108mm
F	116.5mm
G	6mm
H	150mm

	2020/10/05	1	Microsoft Office User	2 of 5
DOCUMENT NUMBER	PUBLISHED DATE	REVISION	CREATED BY	PAGE



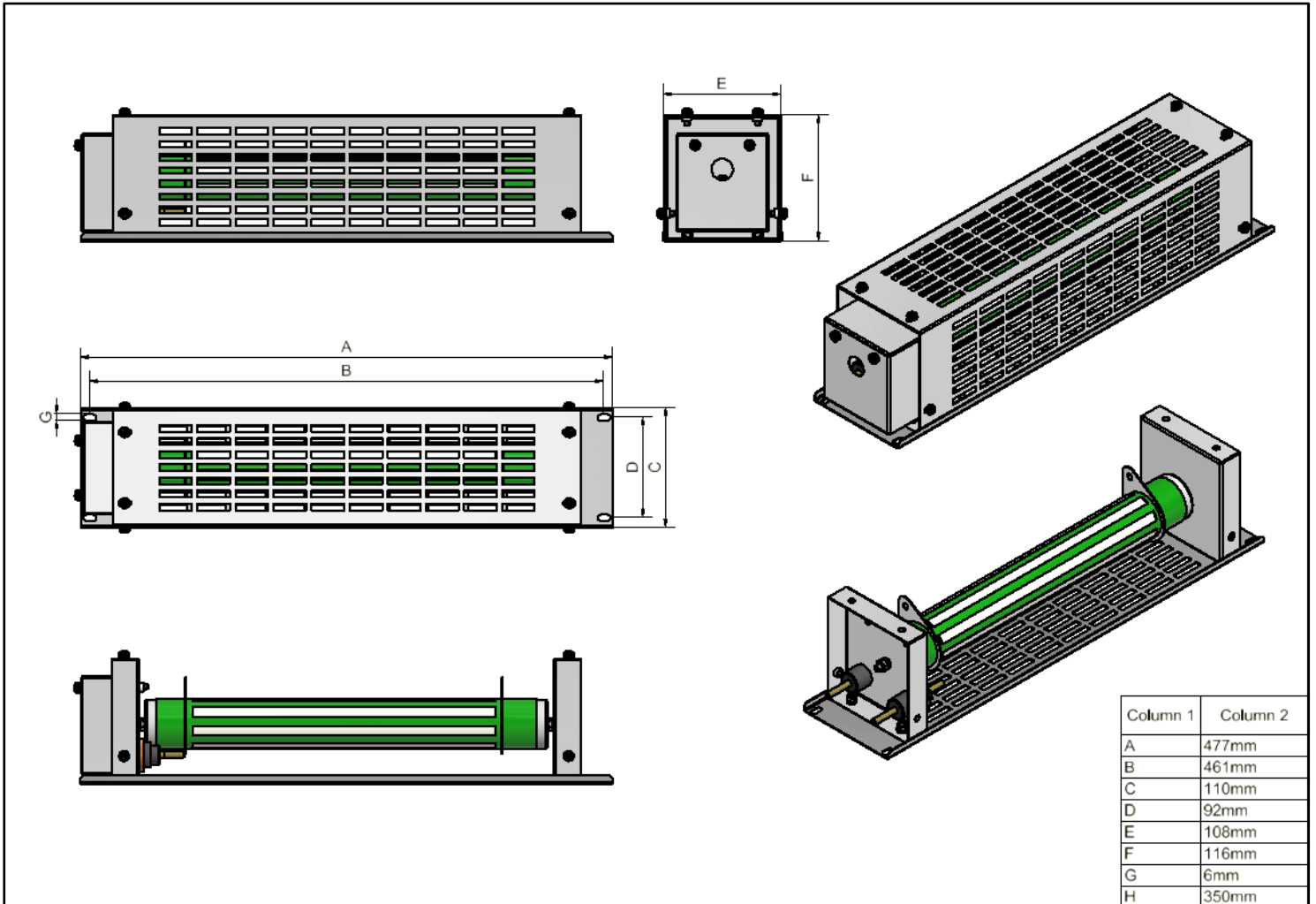
300W RESISTOR ENCLOSURE TYPE 9522-015



	2020/10/05	1	Microsoft Office User	3 of 5
DOCUMENT NUMBER	PUBLISHED DATE	REVISION	CREATED BY	PAGE



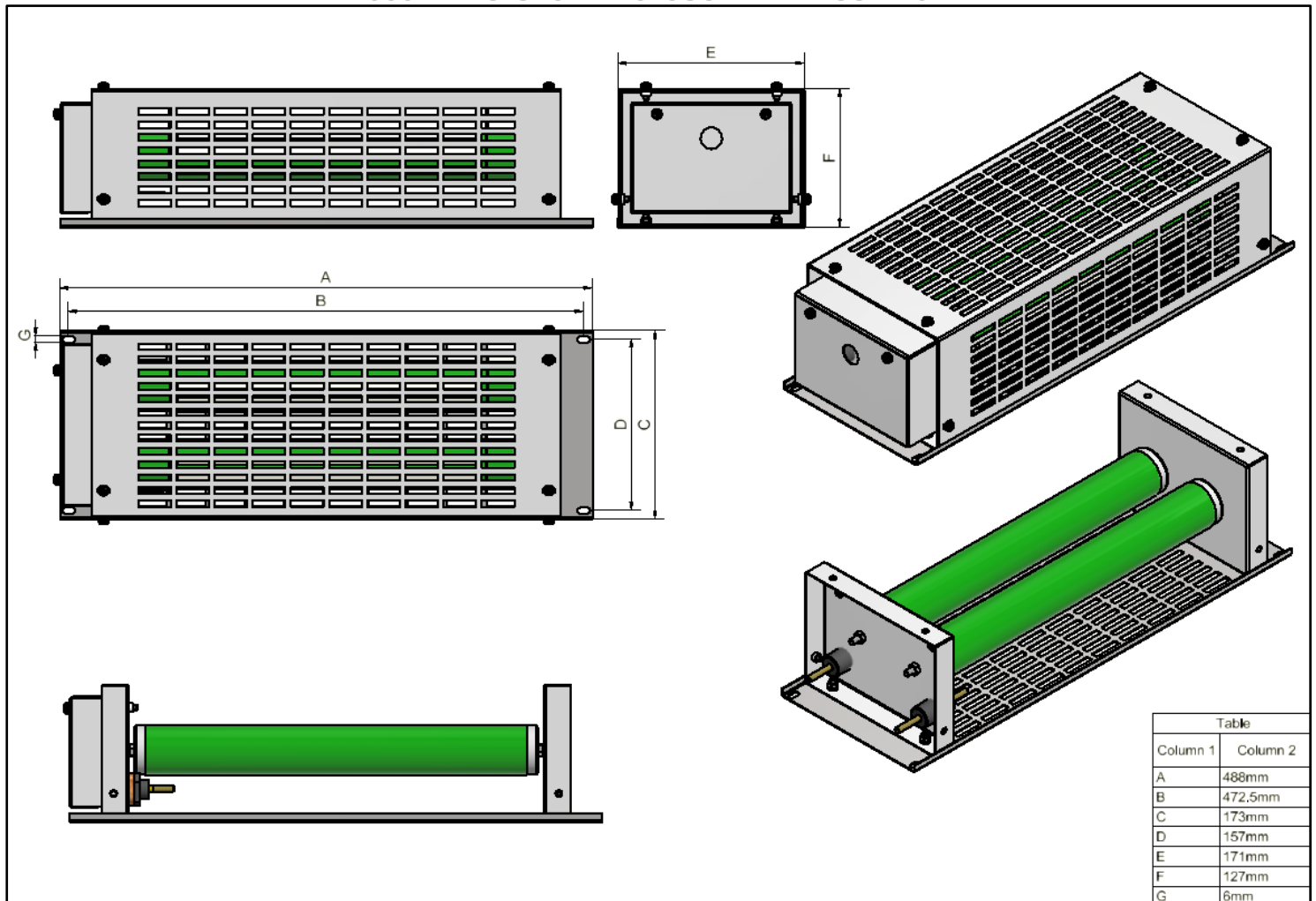
500W RESISTOR ENCLOSURE TYPE 9522-006



	2020/10/05	1	Microsoft Office User	4 of 5
DOCUMENT NUMBER	PUBLISHED DATE	REVISION	CREATED BY	PAGE



1000W RESISTOR ENCLOSURE TYPE 9522-014



	2020/10/05	1	Microsoft Office User	5 of 5
DOCUMENT NUMBER	PUBLISHED DATE	REVISION	CREATED BY	PAGE